

MM - Sx - Headache - Acute

version 5.2 6/26/02
D. Pepper MD

Red Flags

- fever
- change in Sx or Mood
- mucal rigidity
- high heart rate
- "first" or severe
- neuro deficits

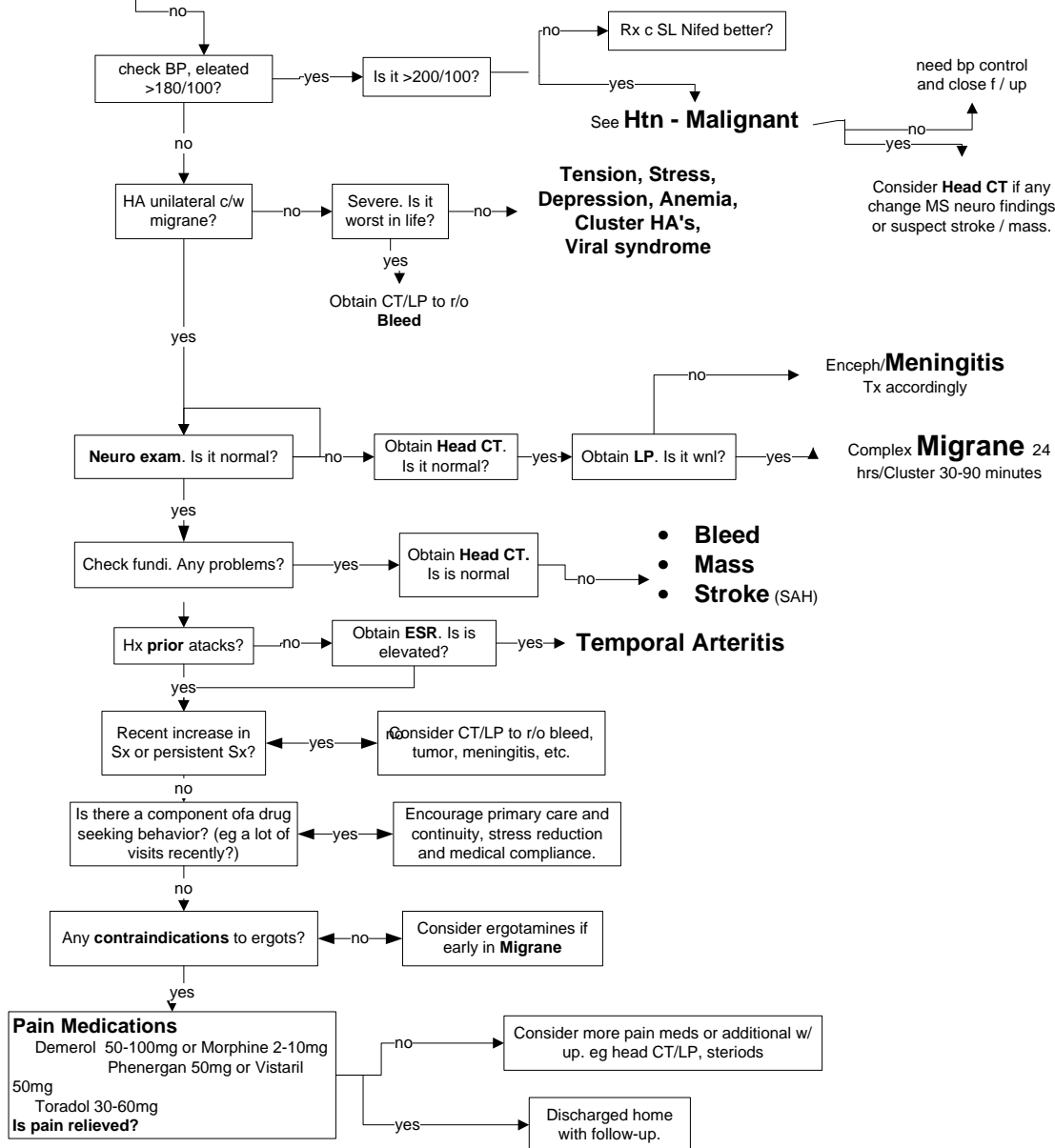
Hx - exposure (CO), ear drainage, HTN eye problems, weakness, sudden onset?

Sx - ear drainage, sinus tenderness
altered M.Status, red eye, neck tender

MAP MASTERS

use all info with
a grain of salt

© — dpepper md



related MAPs - HTN, stroke AMS, head CT, Proc-LP
references
Thanks to J. Schaefer and J. Pepper